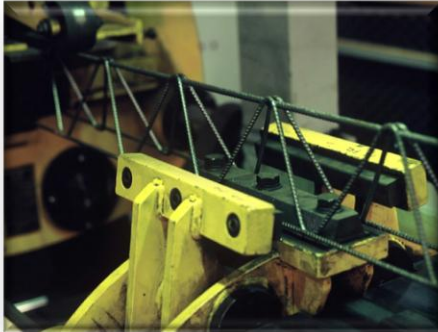


Lattice Girders



Lattice girders serve some of the best functions in construction support systems, and offer an economical alternative to other support methods for a wide variety of applications.

It is lightweight, can be handled easily without special equipment and therefore is best suited in slab reinforcement, making it easy to install.

Lattice girders have been tried and tested with great success in numerous operations. It is used, where concreting is performed in two stages, mainly as reinforcement of prefabricated slabs and beams.

The product is manufactured from cold drawn high tensile black deformed or smooth wire.



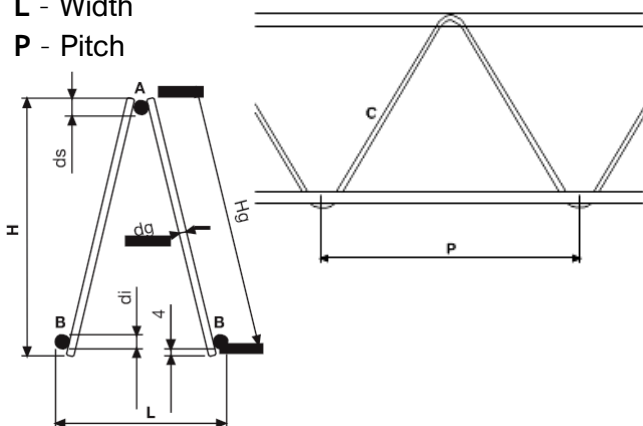
FEATURES AND APPLICATIONS

- ⊙ Lightweight and easy to install
- ⊙ Suitable for Fence posts, roof trusses, purloin and pre-cast beam / slab reinforcement
- ⊙ Widely used in mining tunneling for roof support
- ⊙ The diagonal lines of steel give support in all directions, helping to prevent the Lattice Girder from bending
- ⊙ Quality assurance – Manufactured to the ISO9001:2015 Specifications.

SPECIFICATIONS

Lattice Girders are welded at 200mm cross centre along the lattice length and comes in standard 13m lengths.

- A - Upper longitudinal wire (Top wire)
 B - Lower longitudinal wire (Bottom wire)
 C - Stirrup wire (Zig-Zag)
 H - Height
 L - Width
 P - Pitch



*Non Standard Lengths and sizes available upon request

REFERENCE	A TOP WIRE (mm)	B BOTTOM WIRE (mm)	C ZIG-ZAG (mm)	H HEIGHT (mm)	L WIDTH (mm)
2649	12	8	5,6	200	80
2378	10	8	5,6	200	80
2146	8	8	5,6	200	80
2026	10	8	5,6	135	80
1992	10	8	5,6	125	80
1841	8	8	5,6	135	80
1827	8	8	5,6	110	80
1783	8	8	5,6	100	80
1658	10	5,6	5,6	135	80
1588	10	5,6	5,6	100	80
1479	8	5,6	5,6	135	80
1379	8	5,6	5,6	100	80
1282	8	5,6	5,6	85	80